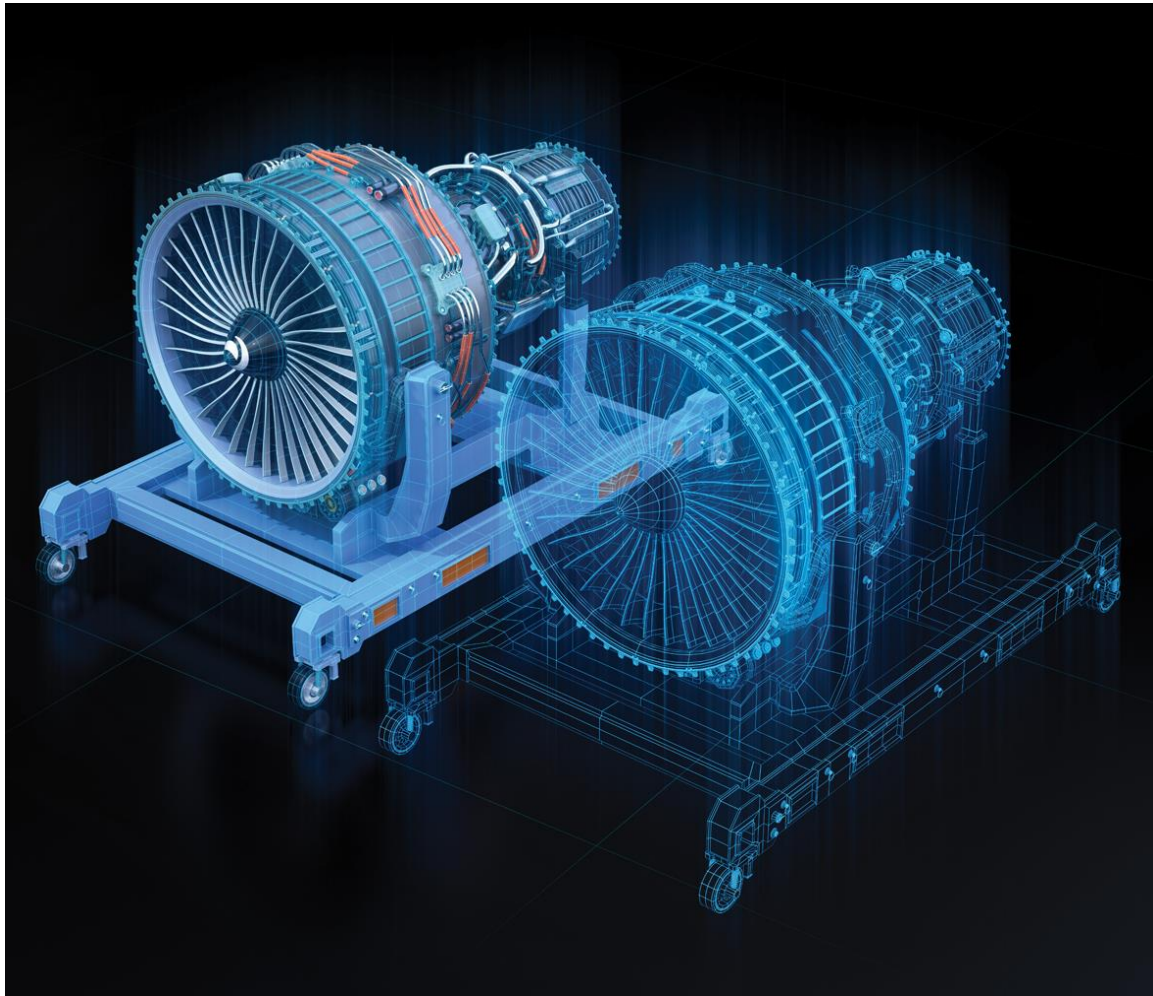


Technion-Israel Institute Technology

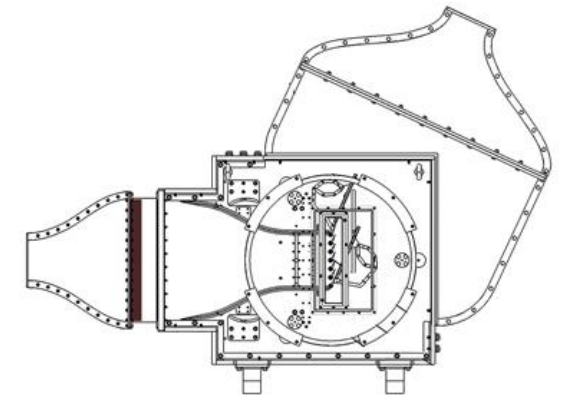
Validate Versatile transonic micro-turbine test rig

SIEMENS
Ingenuity for life



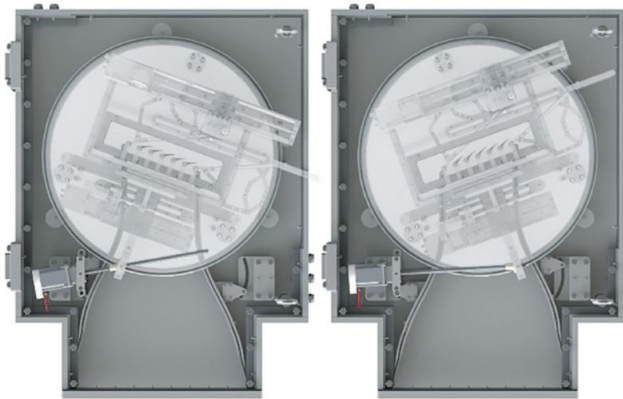
Technion uses Simcenter FLOEFD simulations to give researchers confidence their test rig will perform as expected

This in turn gives design engineers confidence in their simulations of evolutionary design changes in micro-turbomachinery

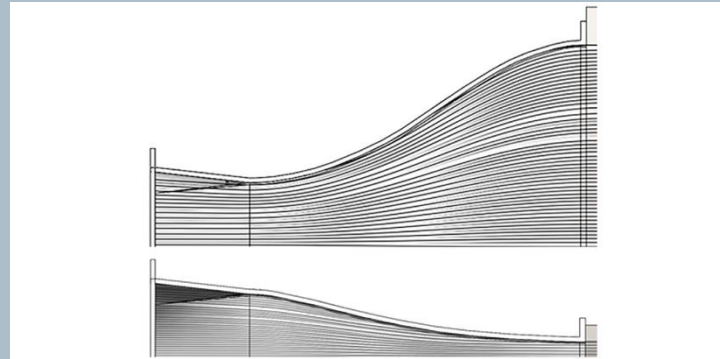


Technion-Israel Institute Technology

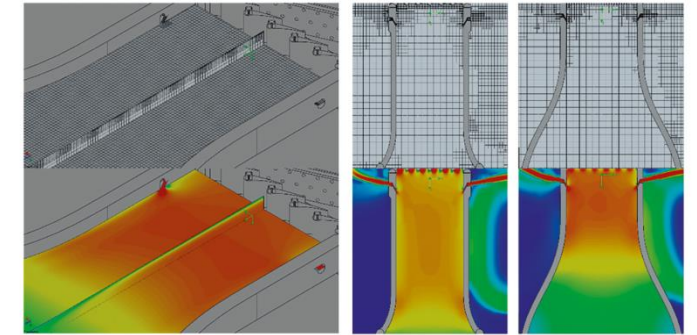
Validate Versatile transonic micro-turbine test rig



Optimize the design of the inlet, frontboards and tailboards



Inlet and cross-sections



Frontboard simulations

- Provided design engineers confidence in their simulations of evolutionary design changes in microturbomachinery

- Inlet flow characteristics are crucial factor for the test section performance
- The design was tested using Simcenter FLOEFD

"... Simcenter FLOEFD simulations give the researchers at Technion confidence that their test rig will perform as expected and when complete will be able to provide validation for future CFD simulations..."

Beni Cukurel, Assistant Professor